

## HAML-RBH Direct Drive and Jackshaft operator

Commercial and Industrial Doors

### Specifications:

Available in 1.0" or 1.25" hollow shaft models

UL 325 Compliant

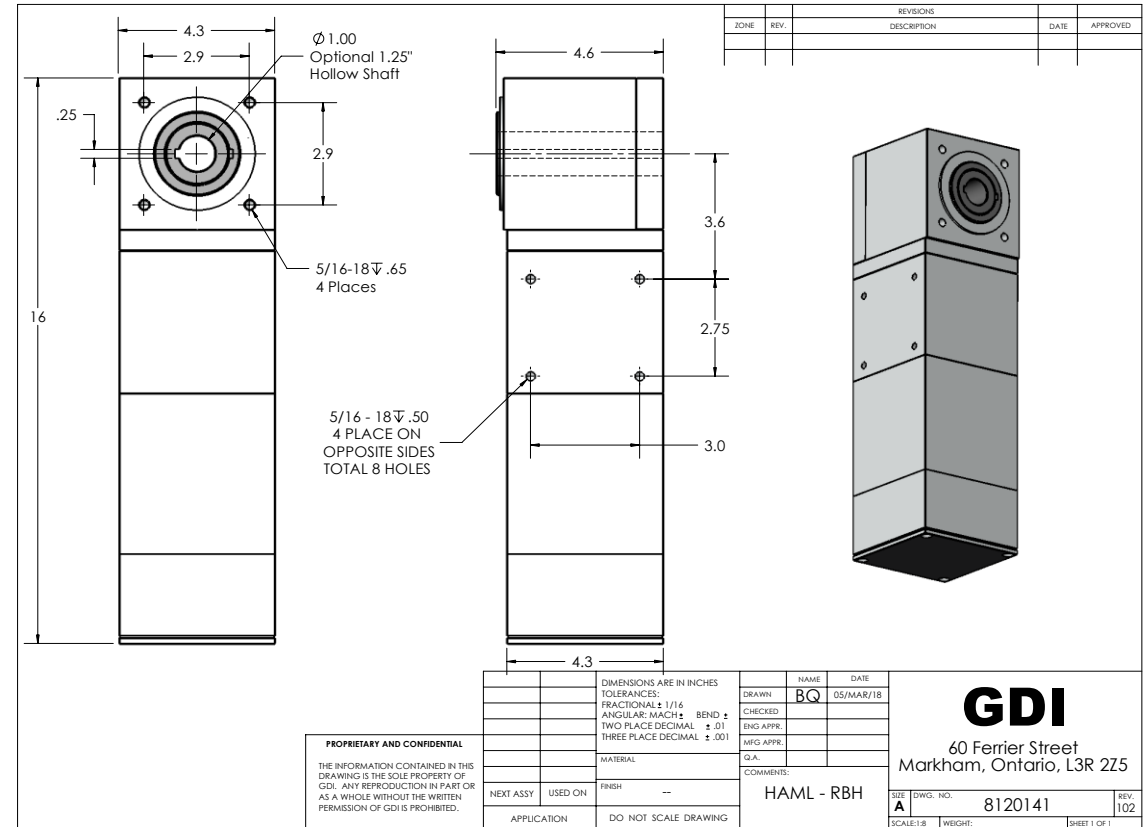
5000 Open/Close Cycles/day

Operator works with 115, 208, 230, 460, 575VAC 50/60Hz

### The HAML-RBH operator is available in 3 models:

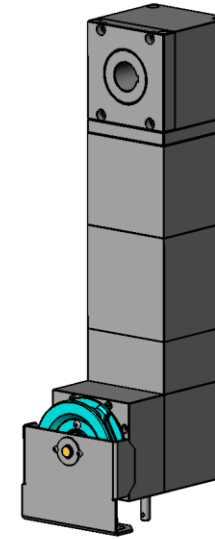
- Standard 16"x16"x6" enclosure Nema 1 rating  
HAML-RBH-2030-NLF0000425-1000:
- Ultra compact 12"x12"x4" enclosure Nema 1 rating  
HAML-RBH-1030-NLF0000425-1000:
- 16"x14"x7" enclosure Nema4/4x rating, and water tight motor  
HAML-RBH-A830-NLF0000425-1000:

Note: When ordering the HAML operator "425" is for 1.0" hollow shaft, and change "425" to "426" for a 1.25" hollow shaft

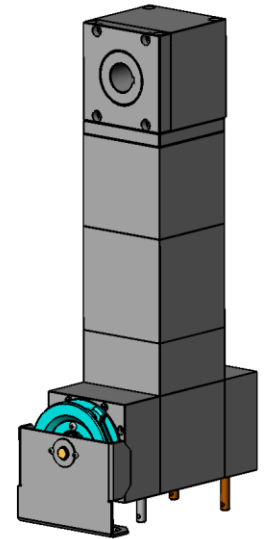


## Accessories:

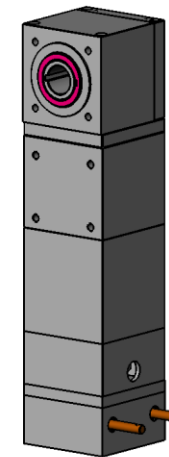
- Hoist:  
Allows for manual operation of gearmotor (water tight)
- Hoist with brake:  
Allows for manual operation of gearmotor with brake (floor level release and water tight)
- Brake:  
Brake on gearmotor (water tight)
- Panel mounted buttons:  
Open/Close/Stop buttons mounted to the face of the enclosure (nema4/4x rated buttons)
- Battery back-up:  
36VDC battery back-up offering typically 50 to 200 cycles of operation on AC power loss (when using the Ultra compact enclosure battery back-up will go into a separate enclosure)
- UL-325 monitored photo eyes:  
Fraba through beam monitored safety eyes



**Hoist**



**Hoist with brake**



**Brake**

## When a brake is required:

1. On roll up doors with heavy curtain weight
2. On all rolling steel doors
3. On vertical lift and high lift sectional doors.
4. On heavy standard lift sectional doors.
5. Brake can refer to brake or brake with hoist

## What you get and what you need:

The operator is supplied with a 10' wire harness that can be extended on request. It is up to the installer to provide the correct 1/2" conduit as per the application and corresponding code.

The operator comes with 1/4" key stock for mounting on the door shaft.

If the operator is installed without a monitored safety device than the closing cycle will require constant pressure to close.

## The HAML Family:

For higher speed requirements look to the HAML-RCH operator.

For heavier doors look to the HAML-HR10 operator.

Balanced sectional door		
**Drum Diameter (inches)	Maximum Door Weight (lbs)	Top Door Speed (inches/sec)
4	3000	14
5	2400	17
6	2000	20
7	1714	24
8	1500	24*
9	1333	24*
10	1200	24*
11	1091	24*
12	1000	24*
13	923	24*
14	857	24*

\* Limit door speed adjustment to 24 in/sec or less

\*\*Note: drum diameter is measured from where the cable comes off the drum at the fully closed position



16"x16"x6" Nema1  
Control panel with optional  
Push buttons

(Nema4/4X available)



HAML-RBH gear motor

Balanced rolling steel door		
Diameter of Door Roll when fully open (inches)	Maximum Curtain Weight (lbs)	Top Door Speed (inches/sec)
4	1200	14
5	960	17
6	800	20
7	686	24
8	600	24*
9	533	24*
10	480	24*
11	436	24*
12	400	24*
13	369	24*
14	343	24*
15	320	24*
16	300	24*
17	282	24*
18	267	24*
19	253	24*
20	240	24*

\* limiting speed to 24 in/sec suggested